

The Liverpool (D Dur)
D

2. HORNPIPER



IRISH PJ KAPO5

0 5 4 0 4 0 5 2 5 2

JIG

My Darling Asleep (D Dur)

D A G D



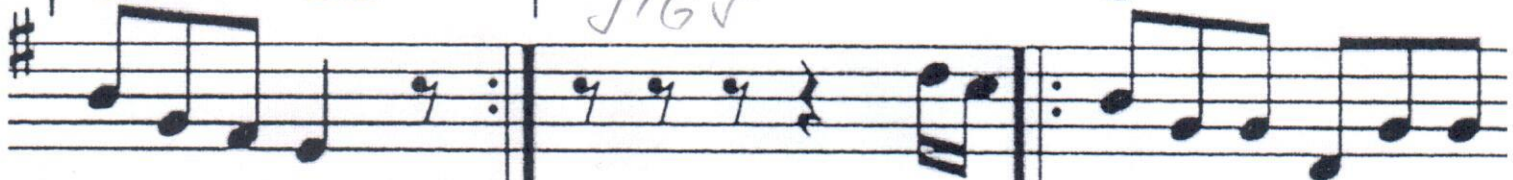
IRISH PJ KAPO5

0 2 5 5 4 0 0 2 0 5 0 5

Irish washerwoman (G Dur)

JIG

H7 em



IRISH PJ KAPO5

5 3 2 5 5 0 5 5

2.

POLKA

Maggie in the woods (G Dur)

G em G



IRISH PJ KAPO5

2 0 5 0 5 0 2 0 0 3 0

POLKA

The Kerry Dance (G Dur)

G 3 C G

Violine 1



IRISH PJ KAPO5

5 0 2 0 5 3 0 5 2 3

REEL

Father Kelly's (G Dur)

B G A7 G

Musical notation for Father Kelly's in G major, featuring a treble clef, a key signature of one sharp (F#), and a 2/4 time signature. The melody consists of eighth and quarter notes. A repeat sign is present in the middle of the piece.

IRISH PJ KAPOV
"BLACK AND DECKLE"

5 0 2 5 2 0 5 2 5

IRISH PJ KAPOV

Turkey in the straw (G Dur)

REEL

Musical notation for Turkey in the straw in G major, featuring a treble clef, a key signature of one sharp (F#), and a 2/4 time signature. The melody consists of eighth and quarter notes. A repeat sign is present in the middle of the piece.

2 0 5 4 5 0 5 0 4 5 0 0 0 5 0 2 2 2 0 5

SLIDES

Denis Murphy's (D Dur)

D

Musical notation for Denis Murphy's in D major, featuring a treble clef, a key signature of two sharps (F# and C#), and a 12/8 time signature. The melody consists of quarter and eighth notes. A repeat sign is present in the middle of the piece.

IRISH PJ KAPOV 2 0 0 4 2 0 4 0 0

SLIDES

O'Keefe's (am)

am

Musical notation for O'Keefe's in A minor, featuring a treble clef, a key signature of no sharps or flats, and a 2/4 time signature. The melody consists of quarter and eighth notes. A repeat sign is present in the middle of the piece.

IRISH PJ KAPOV

0 0 0 5 2 0 2 5 2

SLIDES

The Brosna (G Dur)

am

Musical notation for The Brosna in G major, featuring a treble clef, a key signature of one sharp (F#), and a 2/4 time signature. The melody consists of quarter and eighth notes. A repeat sign is present in the middle of the piece.

IRISH PJ KAPOV

2 0 5 5 0 2 0 2 5 2

13

A fig for a kiss (em) em

SLIP JIGS

Musical notation for 'A fig for a kiss' in treble clef, key of D major (two sharps). The melody consists of quarter notes and eighth notes. A repeat sign is present after the first four notes.

IRISH BO KAPO 5

Fingerings for 'A fig for a kiss': 4 5 2 2 2 2 0 5

WALTZ - MAZURKA

Sonny Brogan Mazurka (D Dur)

Musical notation for 'Sonny Brogan Mazurka' in treble clef, key of D major (two sharps), 3/4 time signature. The melody features eighth and quarter notes. Chords D and hm are indicated above the staff. A repeat sign is present after the first four notes.

IRISH BO KAPO 5

Fingerings for 'Sonny Brogan Mazurka': 0 4 0 0 5 4 0 5 5 0 2 0

Planxty Irwin (G Dur)

3/4 WALTZ

Musical notation for 'Planxty Irwin' in treble clef, key of G major (one sharp), 3/4 time signature. The melody consists of quarter notes. Chords G, C, D7, em, am, and G are indicated above the staff. A repeat sign is present after the first two notes.

IRISH BO KAPO 5

Fingerings for 'Planxty Irwin': 5 3 2 0 2 3 5 3 2 0 5 3