

Brown-Eyed Girl

Van Morrison

1 x harp

1 x alle

G C G D

G C G D

Hey where did we go, days when the rains came

Down in the hollow, playin' a new game

Laughing and a running hey, hey, skipping and a jumping

In the misty morning fog with our hearts a thumpin'

And you, my brown eyed girl

You my brown eyed girl

G C G D ...

C D G e

C D G D

Whatever happened, to Tuesday and so slow

Going down the old mine, with a transistor radio

Standing in the sunlight laughing, hiding behind a rainbow's wall

Slipping and sliding all along the waterfall

With you, my brown eyed girl

You my brown eyed girl

G C G D ...

C D G e

C D G D

Do you remember when we used to sing

Sha la la la la la la la la la te da

Sha la la la la la la la la la te da la te da

2 x harp

D

G C G D ...

So hard to find my way, now that I'm all on my own

I saw you just the other day, my how you have grown

Cast my memory back there, Lord, sometime I'm overcome thinking 'bout

Making love in the green grass, behind the stadium

With you, my brown eyed girl

You my brown eyed girl

G C G D ...

C D G e

C D G D

Do you remember when we used to sing

Sha la la la la la la la la la te da

Sha la la la la la la la la la te da la te da

2 x bass/drums

(ohne git) Sha la la la la la la la la la te da

Sha la la la la la la la la la te da la te da

(mit git) Sha la la la la la la la la la te da

Sha la la la la la la la la la te da la te da

2 x harp

evtl. ad lib

D

G C G D ...

Brown-Eyed Girl

Van Morrison

Intro

Violine

Musical notation for the Intro section, featuring a violin line and guitar chords G, C, G, D.

Thema

Musical notation for the first line of the Theme, starting at measure 5, with chords G, C, G, D.

Musical notation for the second line of the Theme, starting at measure 9, with chords G, C, G, D, G.

Musical notation for the third line of the Theme, starting at measure 14, with chords C, G, D, G.

Musical notation for the fourth line of the Theme, starting at measure 18, with chords C, G, D, C.

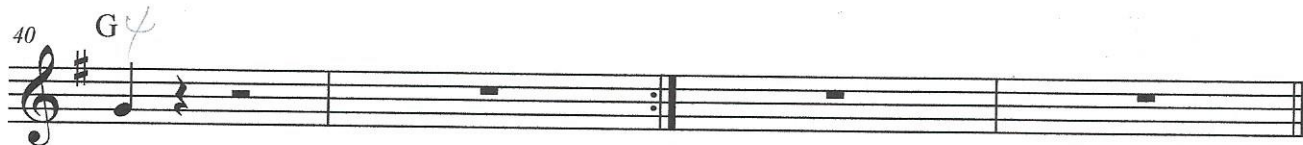
Musical notation for the fifth line of the Theme, starting at measure 22, with chords D, G, em, C, D.

Musical notation for the sixth line of the Theme, starting at measure 27, with chords G, D, D7.

Refrain

Musical notation for the first line of the Refrain, starting at measure 32, with chords G, C, G, D.

Musical notation for the second line of the Refrain, starting at measure 36, with chords G, C, G, D.



Guitar

Intro

G C G D

Thema

G C G D

G C G D

G C G D

G C G D

C D G em

C D G D

Refrain

D7 % G C

G D G C

G D G %

Mandolin

Intro

C F C G

Thema

C F C G

C F C G

C F C G

C F C G

F G C am

F G C G

Refrain

G7 % C F

C G C F

C G C %