

Wild Mountain Thyme

Irish Folk

Mandolin Chords

Violine

Measures 1-4: C F C F

Measures 5-8: C F em am dm F

Measures 9-12: C F C F G C F em

Measures 13-16: am dm F C F

Measures 17-20: C

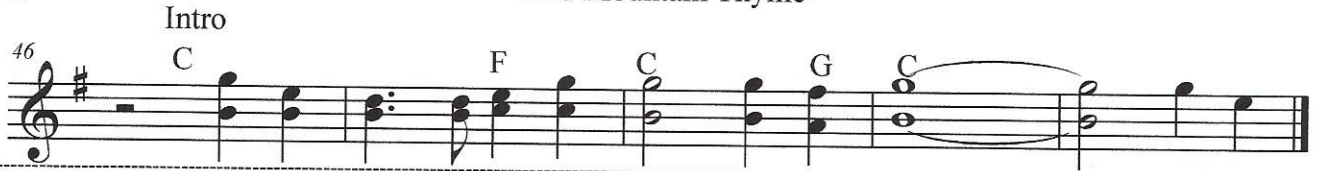
Measures 21-25: Rests

Measures 26-30: Intro C F C G C

Measures 31-35: C F C F C F em am dm F

Measures 36-40: C F C F G C F em am dm F

Measures 41-45: C F C



Wild Mountain Thyme (Mandolin)

- 1) Oh the (C) summer (F) time has (C) come,
and the (F) trees are sweetly (C) blooming
and the (F) wild (em) mountain (am) thyme
grows a- (dm) round the bloomin' (F) heather
Will ye (C) go, (F) lassie, (C) go?

Chorus:

And we'll (F) all (G) go to- (C) gether,
to pull (F) wild (em) mountain (am) thyme
All a- (dm) round the bloomin' (F) heather,
Will ye (C) go, (F) lassie, (C) go?

- 2) I will (C) build my (F) love a (C) bower,
by yon (F) cool crystal (C) fountain
and (F) round (em) it I will (am) pile,
all the (dm) wild flowers o' the (F) mountain
Will ye (C) go, (F) lassie, (C) go?

Chorus:

- 3) I will (C) range (F) through the (C) wilds,
and the (F) deep glen sae (C) dreary
and re- (F) turn (em) wi'their (am) spoils,
to the (dm) bower o' my (F) dearie
Will ye (C) go, (F) lassie, (C) go?

Chorus:

- 4) If my (C) true love (F) she'll not (C) come,
then I'll (F) surely find a- (C) nother
To pull (F) wild (em) mountain (am) thyme,
all a- (dm) round the bloomin' (F) heather
Will ye (C) go, (F) lassie, (C) go?

Chorus....; repeat Chorus